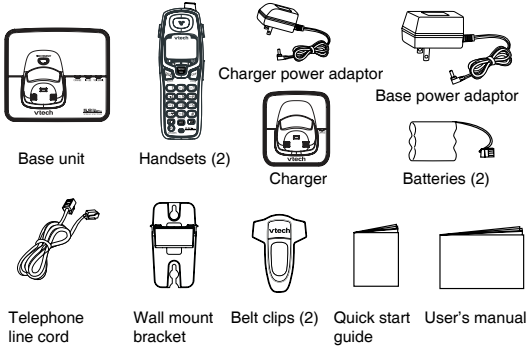


Quick Start Guide

i6725

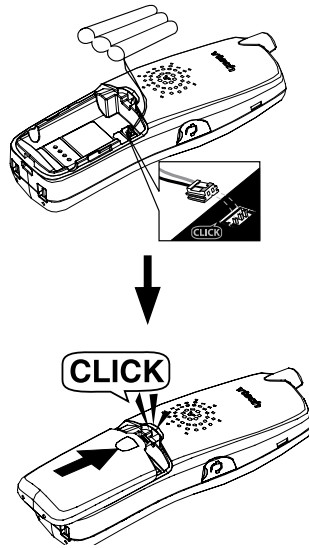
STEP 1 Check package contents

Make sure your phone's packaging includes the following:



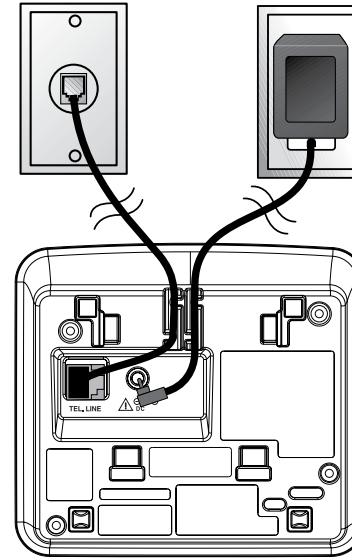
STEP 3 Battery installation

1. Align the two holes in the plug with the socket pins, then snap the plug into place. Place the battery in the compartment with the wires in the upper right corner.
2. Replace cover by sliding it upwards until it clicks into place.



STEP 5 Connect to phone line

Plug one end of the telephone line cord into the telephone line jack at the bottom of the telephone base. Then plug the other end of the cord into the wall telephone outlet.



NOTE:

For complete feature instructions, please refer to your user's manual.

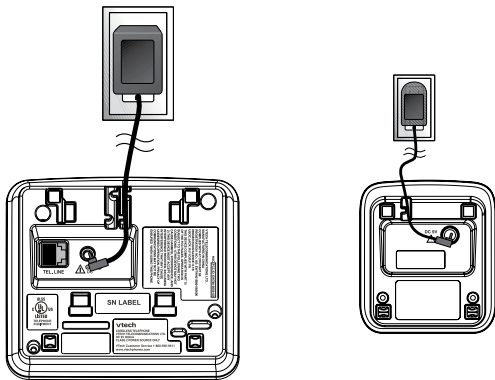
IMPORTANT!

If your product is not working properly:

1. Refer to your user's manual.
2. Visit our website at www.vtechphones.com or www.vtechcanada.com in Canada.
3. Call our customer service at 1-800-595-9511 or 1-800-267-7377 in Canada.

STEP 2 Connect power to telephone base/charger

Plug the power adaptor into an electrical outlet not controlled by a wall switch, and the connector into the power jack on bottom of the telephone base/charger.

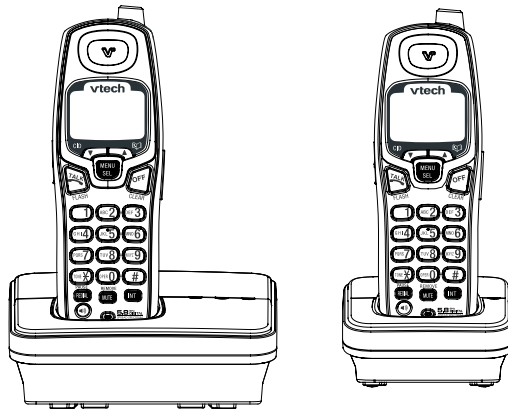


NOTE:

- Use only the power adaptors supplied with your VTech telephone.

STEP 4 Charge the battery

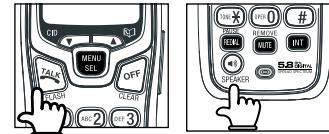
1. Place the handset in the base unit/charger.
2. Charge the battery for at least 16 hours before first use.



STEP 6 Making and receiving calls

Making a call

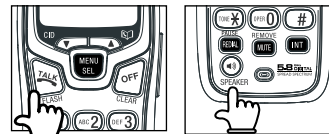
- Press **TALK/FLASH** or **SPEAKER** and listen for dial tone.



- Dial the phone number.
- OR-
- Dial the phone number.
- Press **TALK/FLASH**.

Receiving a call

Press **TALK/FLASH**, **SPEAKERPHONE**, or any dialing key except **OFF**.



Hanging up

Press **OFF** or place the handset in its base/charger.

