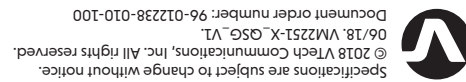




Quick start guide

VM2251
VM2251-2
Video Monitor



Specifications are subject to change without notice.
© 2018 Vtech Communications, Inc. All rights reserved.
06/18_VM2251-X_QSG_VL
Document order number: 96-012238-010-100

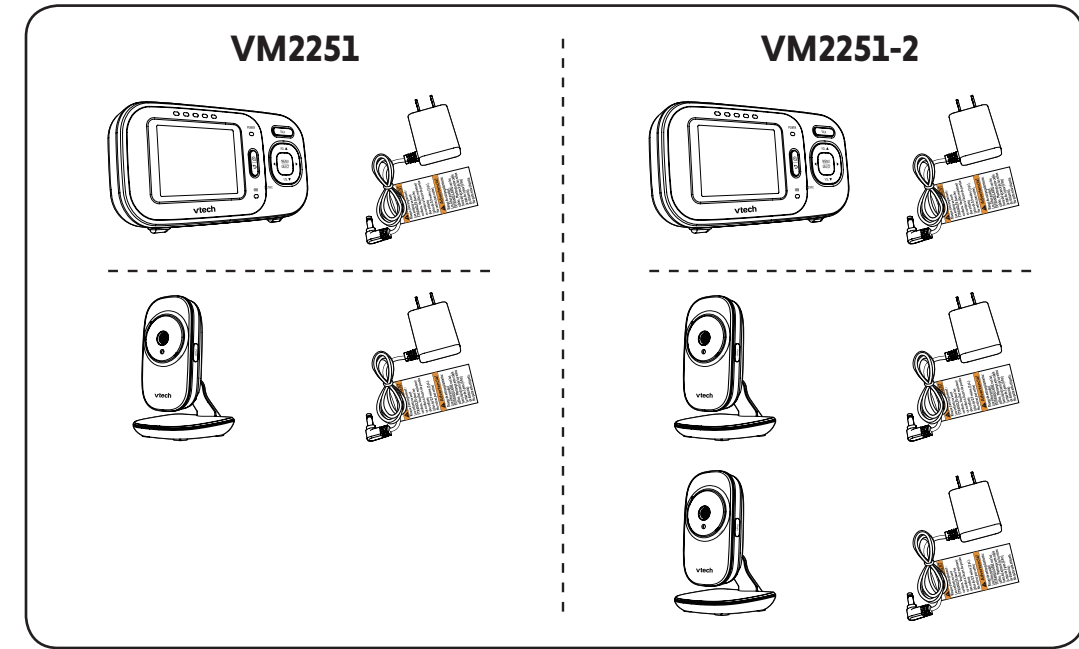


- You can access the online user's manual with any one of the following options:
- Option 1:** Search online with the keyword "VM2251 manual"
 - Option 2:** Visit the webpage www.vtechphones.com/um/vm2251
 - Option 3:** Scan the QR code on the right to open the user's manual in a web browser

NEED HELP?



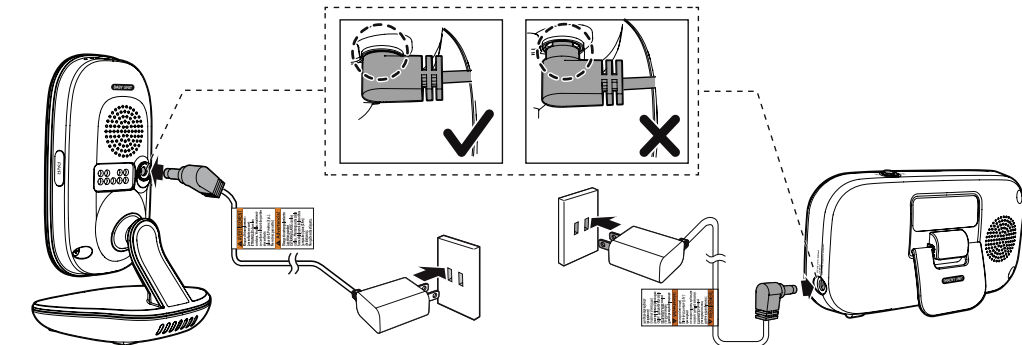
WHAT'S IN THE BOX



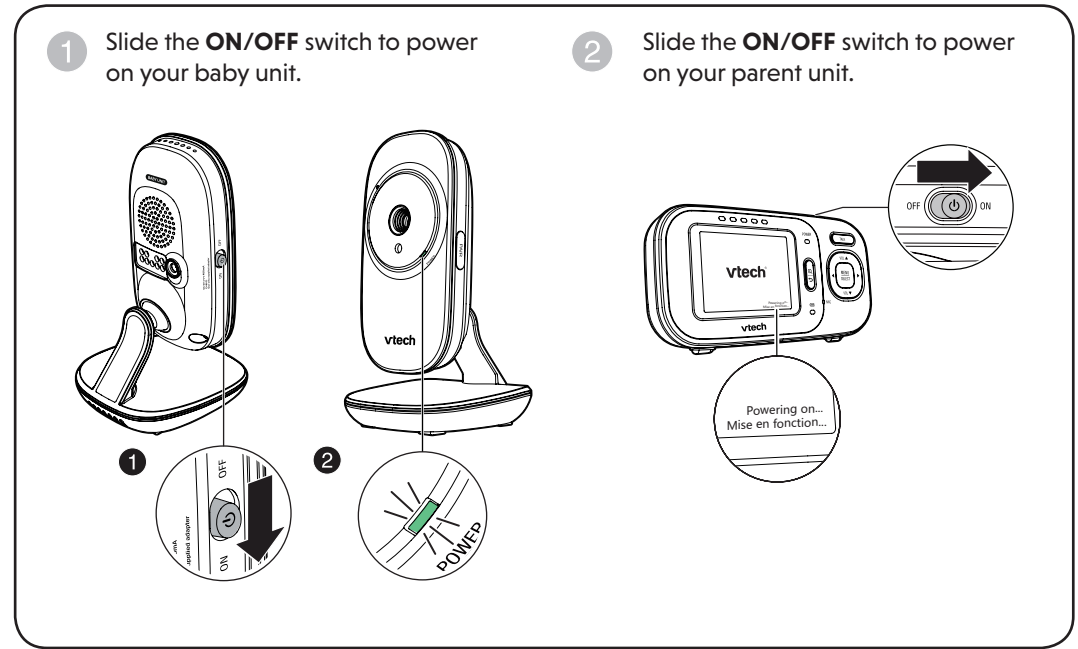
1 CONNECT THE BABY MONITOR

NOTES

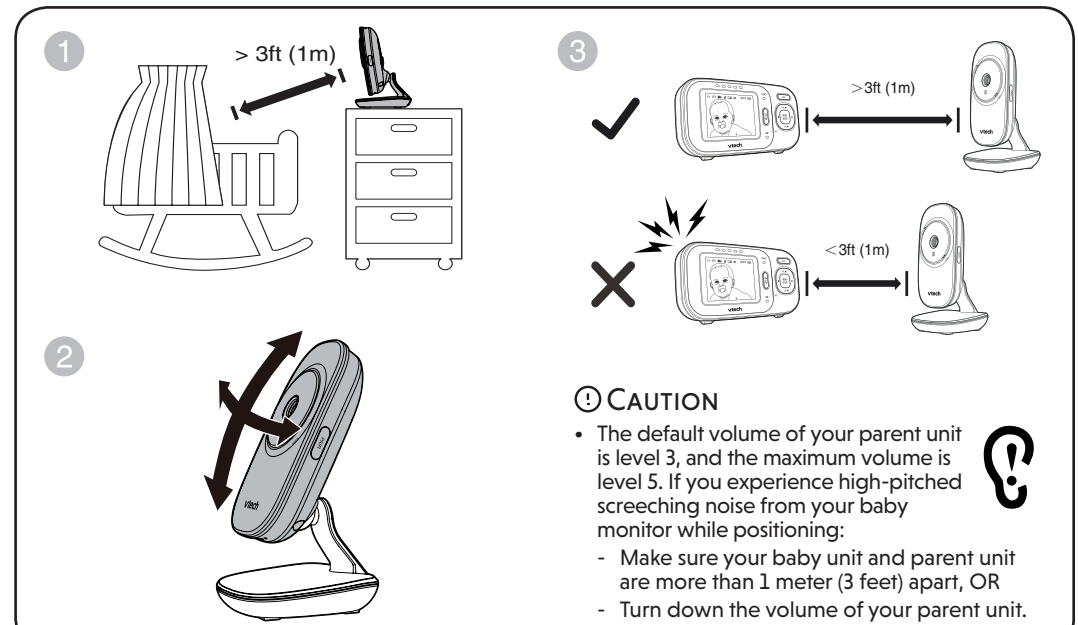
- The rechargeable battery is pre-installed in your parent unit.
- Use only the power adapters supplied with this product.
- Make sure the baby monitor is not connected to the switch controlled electric outlet.
- Connect the power adapters in a vertical or floor mount position only. The adapters' prongs are not designed to hold the weight of baby monitor, so do not connect them to any ceiling, under-the-table, or cabinet outlets. Otherwise, the adapters may not properly connect to the outlets.
- Make sure the parent unit, the baby unit and the power adapter cords are out of reach of children.



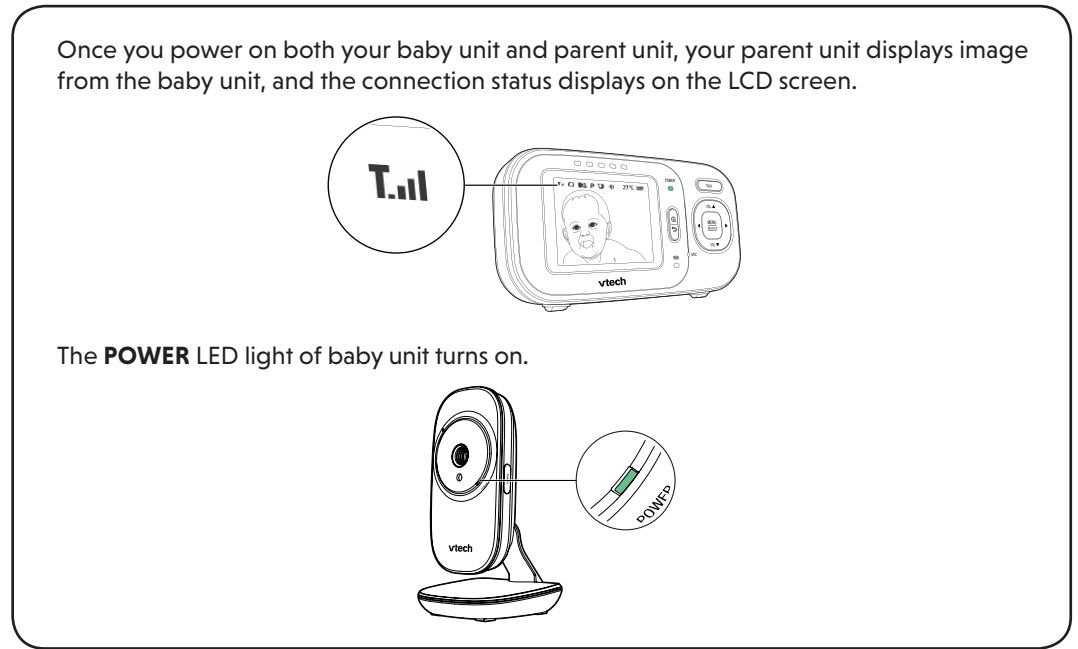
2 POWER ON THE BABY MONITOR



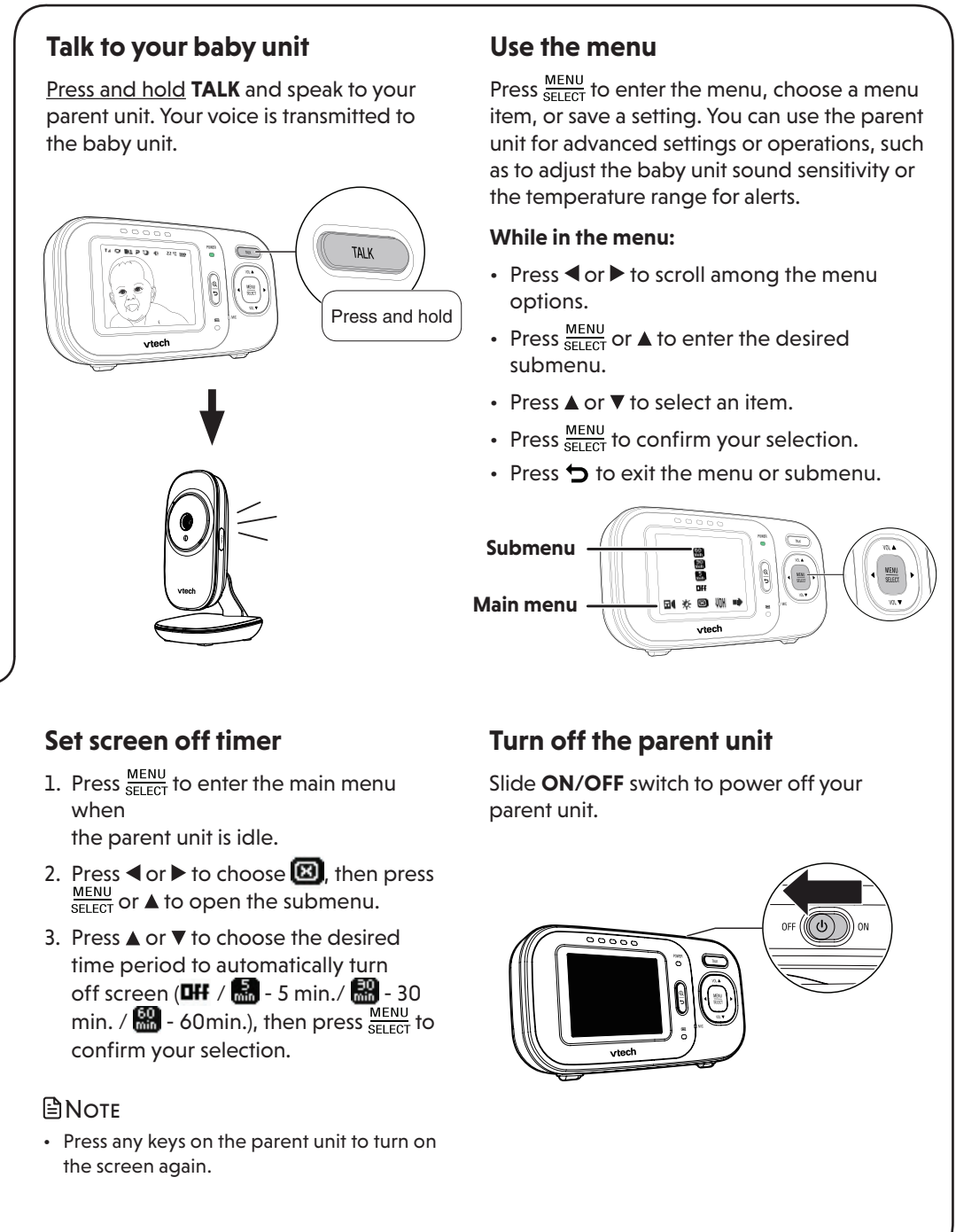
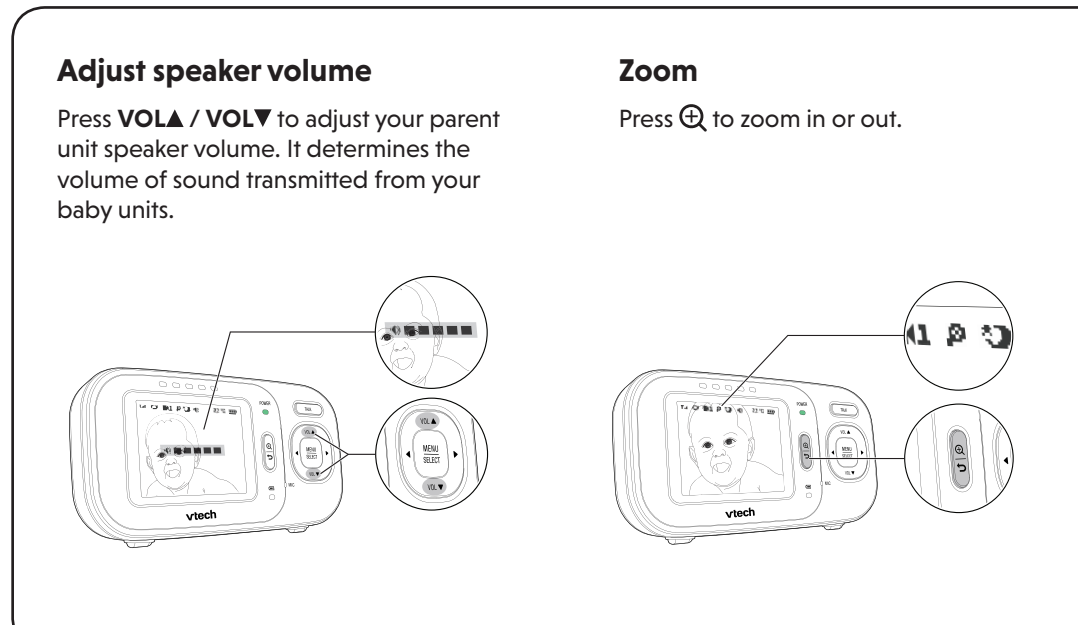
3 POSITIONING THE BABY MONITOR



4 STATUS CHECK



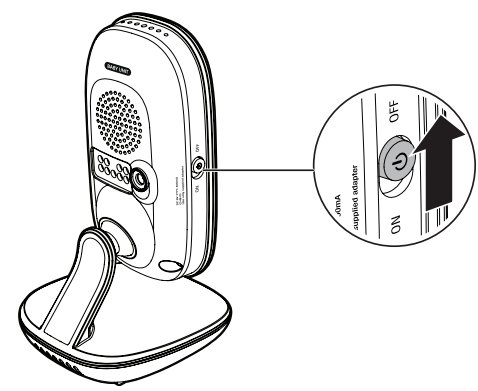
BASIC OPERATION - PARENT UNIT



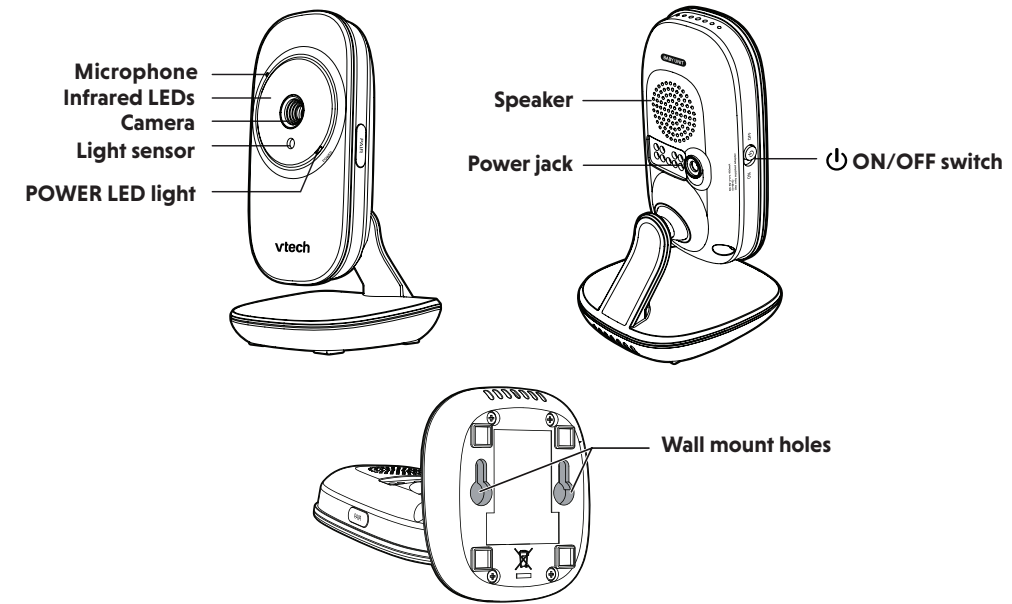
BASIC OPERATION - BABY UNIT

Turn off the baby unit

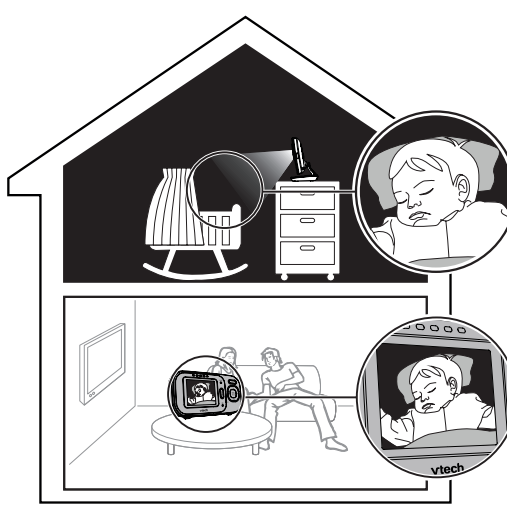
Slide the **ON/OFF** switch to **OFF** to power off your baby unit.



OVERVIEW - BABY UNIT



NIGHT VISION



The baby unit has infrared LEDs that allow you to see your baby clearly at night or in a dark room. When the baby unit being viewed detects low light levels, the infrared LEDs are switched on automatically. The images from the baby unit are in black and white, and appears on the screen.

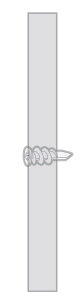
NOTES

- It is normal if you see a short white glare on your parent unit screen as the baby unit is adapting to the dark environment.
- When the infrared LEDs are on, the images are in black and white. This is normal.

TIP

- Depending on the surroundings and other interfering factors, like lightings, objects, colors and backgrounds, the display resolution may vary. Adjust the baby unit's angle or place the baby unit at a higher level to prevent glare and blurry display.

2



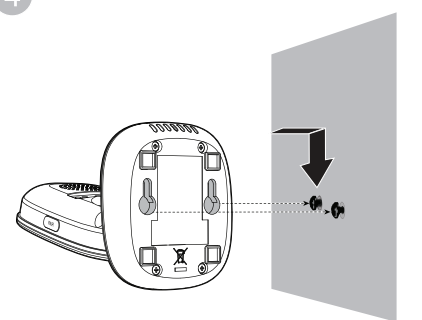
Drill two holes in the wall.

If you drill the holes into a stud, go to step 3.

-OR-

If you drill the holes into an object other than a stud, insert the wall anchors into the holes. Tap gently on the ends with a hammer until the wall anchors are flush with the wall.

4

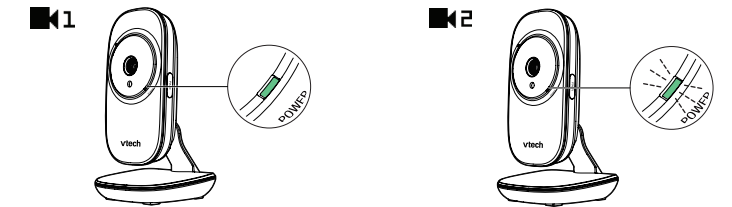


Align the wall mount holes on the baby unit with the screws on the wall. Slide the baby unit down until it locks into place.

FOR VM2251-2 ONLY

Status check - Two baby units

If you are viewing baby unit **1**, the **POWER LED** light of baby unit **1** turns on. As baby unit **2** is not being viewed, its **POWER LED** light flashes.

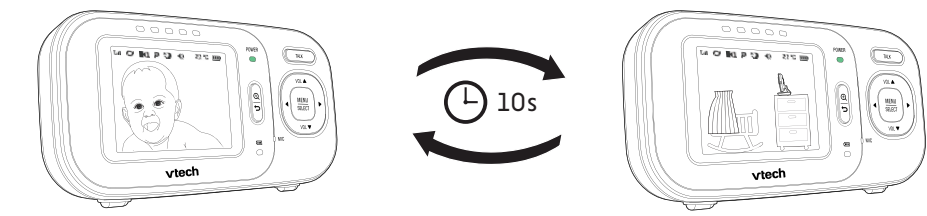


NOTE

- If you power on only one baby unit, your parent unit may display and the **POWER LED** light flashes. Press **MENU/SELECT** and then **◀** or **▶** to choose . Press **MENU/SELECT** or **▲** to open the submenu. Press **▲** or **▼** to select the baby unit you have powered on.

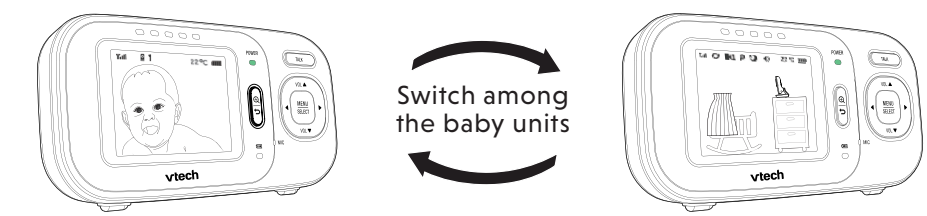
Change different views - Patrol

Press **MENU/SELECT** and then **◀** or **▶** to choose . Press **MENU/SELECT** or **▲** to open the submenu. After that, press **▲** or **▼** to select to enter **PATROL** mode to alternately view the image from one baby unit to the next one in every 10 seconds.

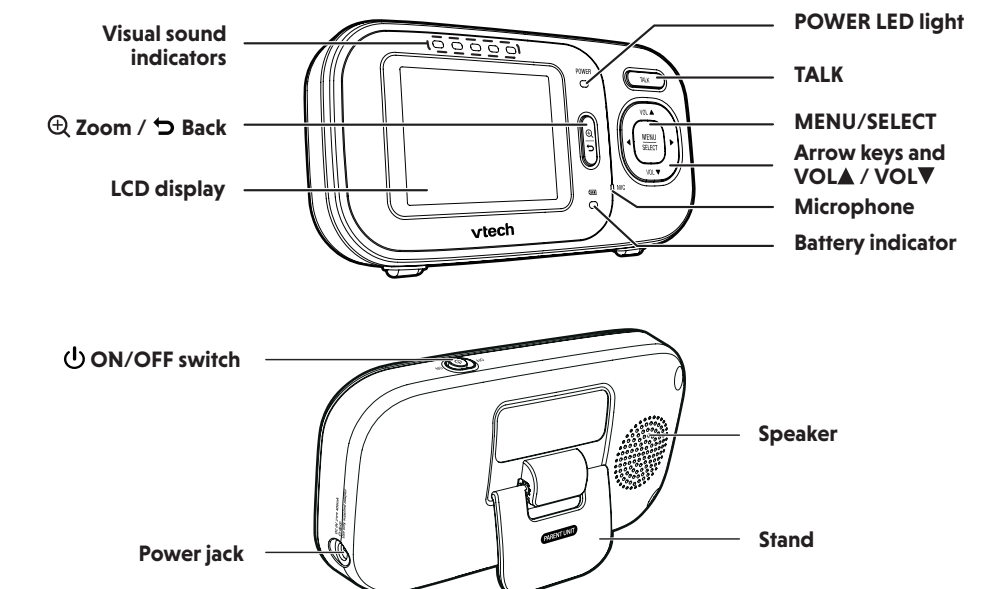


Change different views - Single-cam

Press **MENU/SELECT** and then **◀** or **▶** to choose . Press **▲** to open the submenu. After that, press **▲** or **▼** to select a camera number to enter **SINGLE-CAM** mode.

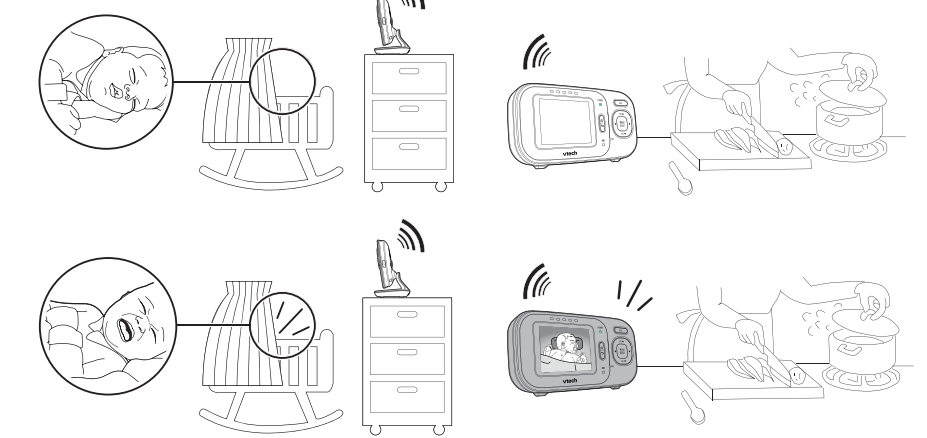


OVERVIEW - PARENT UNIT



SOUND ACTIVATION

When the baby unit detects no sound, the parent unit screen stays off to save power. Once a sound is detected, the parent unit screen turns on automatically. It will then turn off again after 50 seconds of no sound detection.



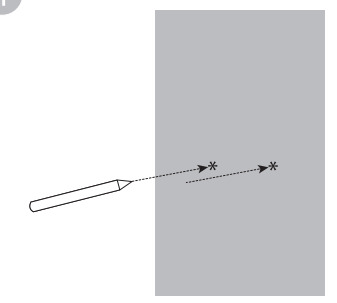
MOUNT THE BABY UNIT (OPTIONAL)

Items to purchase

You will need to purchase the following items separately to mount your baby unit:

- 2 screws
- 2 anchors

1

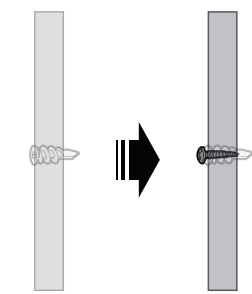


NOTE

- Check for reception strength and camera angle before drilling the holes.

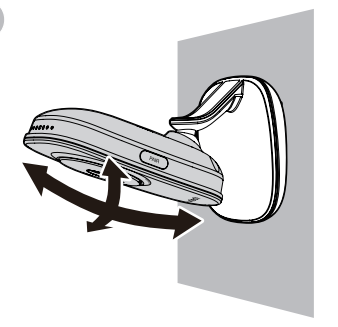
Use a pencil to mark two holes in parallel. Make sure they are the same distance apart as the wall mount holes on the baby unit.

3



Insert the screws into the holes and tighten the screws until only 1/4 inch of the screws are exposed.

5



Adjust the camera angle.